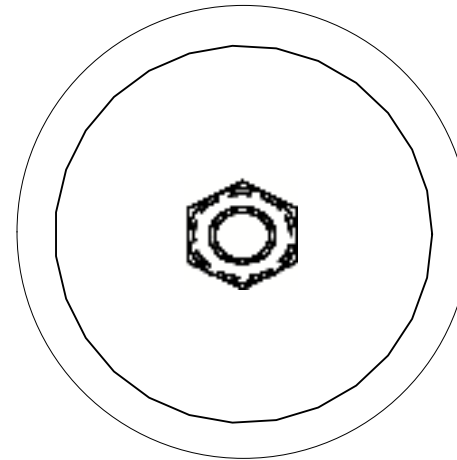
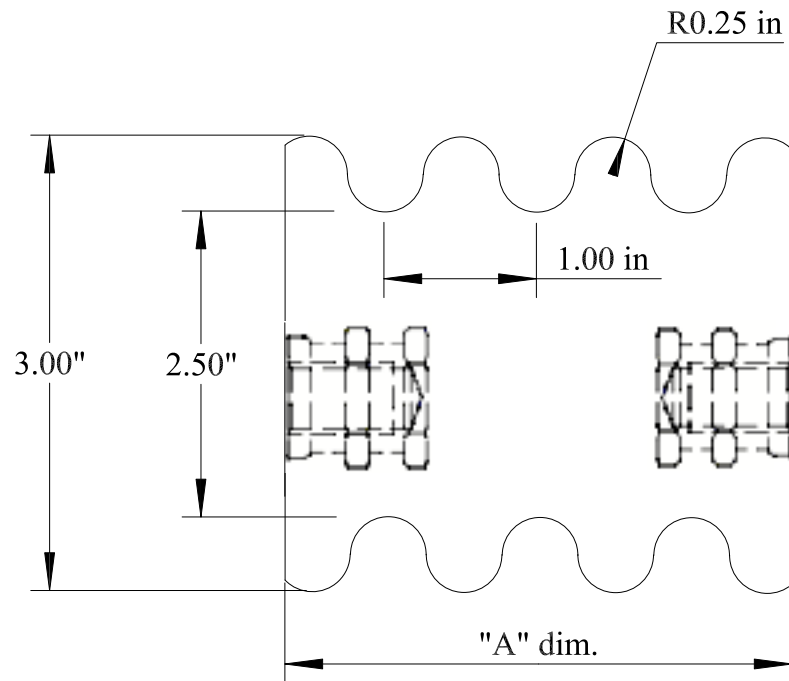


Bill Of Material

Item	Part Number	Insert	"A" Dim. in.	Material
1	2710-11A	1011	2-5/8"	Glass Reinforced Polyester
2	2710-11D	1011	3-3/8"	Glass Reinforced Polyester
3	2710-11F	1011	3-7/8"	Glass Reinforced Polyester
4	2710-10D	1010	3-3/8"	Glass Reinforced Polyester
5	2710-13A	1012	2-5/8"	Glass Reinforced Polyester



Tolerances
 Unless otherwise
 Specified
 Fractional $\pm .015$
 2 pt dec. $\pm .010$
 3 pt dec. $\pm .005$
 4 pt dec. $\pm .0005$
 Dia. $\pm .005$
 Angles $\pm \frac{1}{2}^\circ$
 1 pt. mm ± 0.5
 2 pt. mm ± 0.13



Penn Compression Moulding Inc.
 309 Components Drive
 Smithfield, NC 27577

Name:		2710 Series Standoff Insulator,		Size	A
Dr.	T. A. B.	1/31/17	Chk.	App.	
Scale	Dwg.	2710		Sheet	Rev.
NTS	No.			1 of 1	A